

# RON SCHMITT CONSTRUCTION, INC.

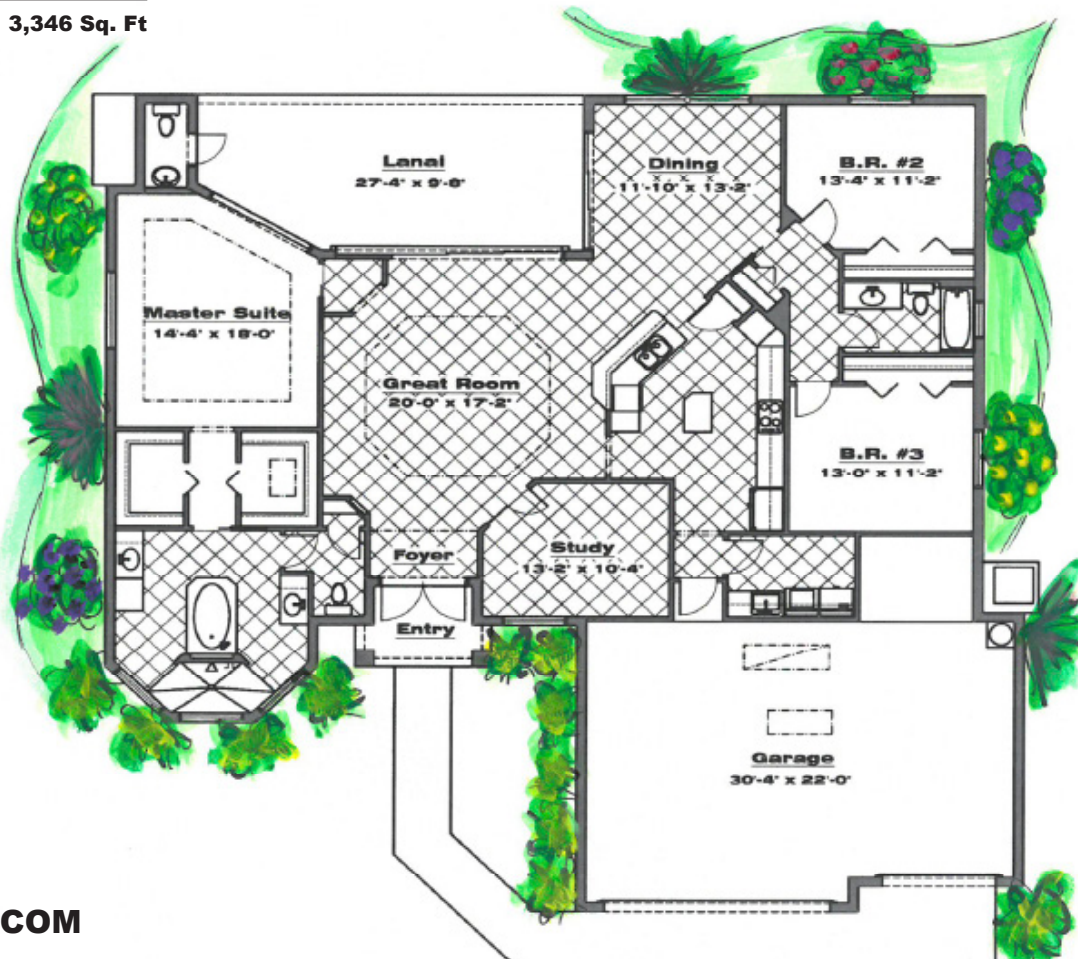
State License # CRC 057624

## THE MALIBU MODEL



### AREA TABULATION

Living	2,223 Sq. Ft.
Lanai	305 Sq. Ft.
Entry	53 Sq. Ft.
Garage	765 Sq. Ft.
<b>TOTAL</b>	<b>3,346 Sq. Ft</b>





# RON SCHMITT CONSTRUCTION, INC.

Office: 239.573.1150  
Mobile: 239.770.8933  
Email: info@rscfl.com

State License # CRC 057624

## THE MALIBU MODEL

Base Price: \$339,000

\* Price Subject to Change

### CONSTRUCTION SPECIFICATIONS

- All homes built to 2010 building code
- Impact windows and doors
- CBS construction with textured stucco finish
- Steel reinforced concrete footings
- 2 course stem wall and fill
- Vapor barrier under 4" reinforced concrete slab
- Pre-cast concrete exterior window sills
- 8 x 16 steel reinforced tie beam
- Engineered roof truss system with 6/12 pitch
- 2 x 4 wood frame interior walls @ 16" on center
- Bora-Care termite protection
- 10' flat ceilings with step up coffers as per plan
- Lanai under truss
- Cement Tile Roof with choice of color
- Aluminum vented soffit and fascia

### ELECTRICAL

- 200-amp service
- 5 T.V. outlets with coaxial cable
- 5 pre-wired telephone outlets
- Smoke detectors as required
- Decorative rocker style light switches
- All recessed lights and fluorescents as per print
- Lighting and ceiling fan package
- Security system
- 2 exterior GFI outlets

### KITCHEN

- Wood raised panel cabinet's w/crown molding
- Granite counter tops with under mount sink
- Stainless steel double bowl sink
- Moen faucet with pull out spray
- Ice maker line with shut off valve
- Garbage disposal
- Appliance package per plan with washer & dryer

### BATHROOMS

- Ceramic tile tub/ shower per plan
- Soaking tub with tile surround and deck per plan
- Full length vanity mirrors
- Granite vanity tops with under mount sinks
- Moen 8" spread faucets
- Comfort height elongated toilets
- 36" high wood raised panel vanities

### ENERGY EFFICIENT FEATURES

- 14 seer high efficiency air conditioning system
- 50-gallon energy efficient water heater
- R-30 batt Insulation over living area
- R-5 exterior wall insulation
- R-13 batt wall insulation between house and garage

### FINISHING TOUCHES

- Divided lite windows on front elevation
- Marble interior window sills
- Round corner bead with knock down finish
- 8' tall sliding glass doors
- 8' tall interior doors
- 3 1/2" door casing and 5/4" base molding
- Crown molding per plan
- Ceramic tile and carpet as per plan
- Fiberglass drop in laundry tub with standard faucet
- Ventilated shelving in all closets
- Three (3) exterior hose bibs
- Upgraded landscape and sod package for 80x125 lot
- Automatic sprinkler system with timer
- Automatic garage door opener with 2 remotes
- Paver driveway and walk as per plans
- Rain gutters over front elevation and over garage

Prices based on an 80 x 125 Cape Coral lot serviced by city water and sewer.

Impact fees, building permits, surveys, and builders risk insurance are included. All prices subject to change with out notice.